



PURE PHOTO
QUALITY

» **widePrint 12"** -
the flexible 12" roll-to-roll printer «



Photo products

purePhoto™ products

- widePrint 12" is an ideal system for efficient production of larger images that are the basis of value added photo products
- They are produced on real photographic paper to deliver purePhoto™ quality



Calendars



Photo books



Panorama posters



Photo prints



Photo posters



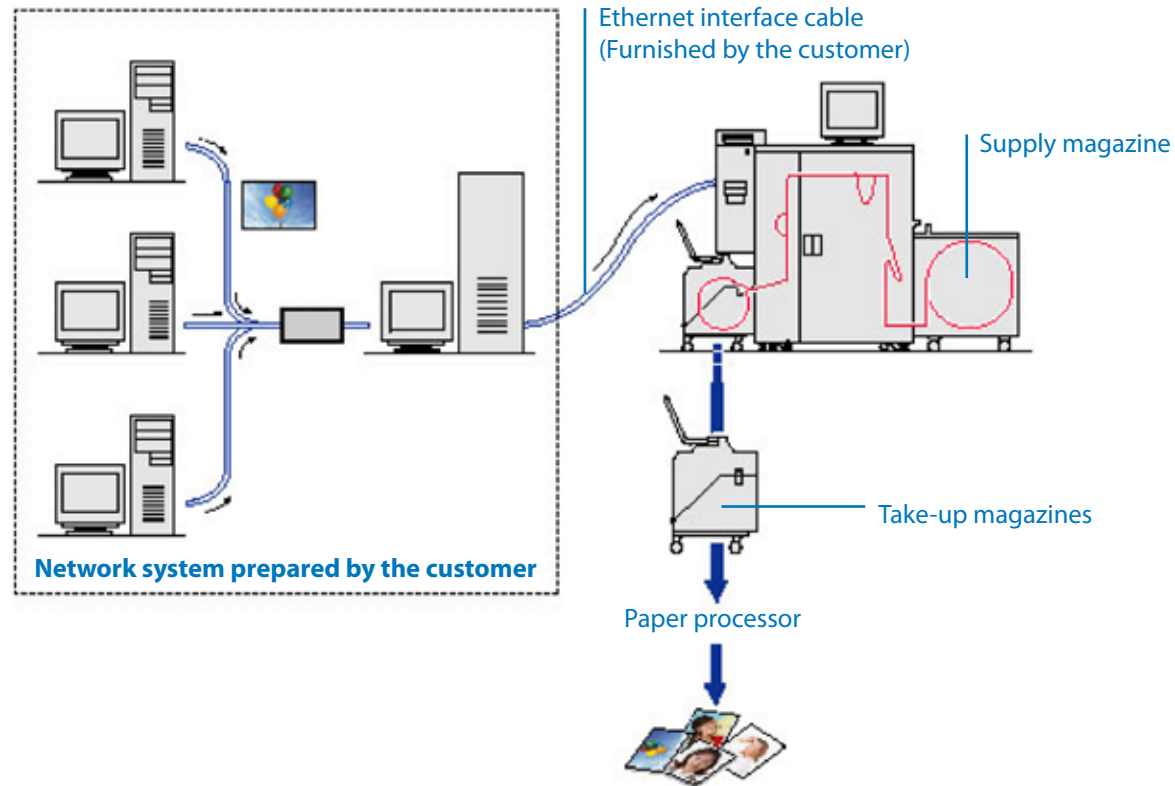
Package prints

PURE PHOTO
QUALITY



What can you do with the widePrint 12"

System connection



Key system within the purePhoto™ workflow

Reliable performance

- The widePrint 12" is a printer designed to be used with a network
- Using its laser engine, it instantaneously prints image data sent from networked computers
- The widePrint 12" is a printer only - paper processing is performed with a separate paper processor

Exposure speed

- 700 prints/h - 30 x 45 cm (12" x 18")
- 1,570 prints/h - 30 x 20 cm (12" x 8")
- 1,576 prints/h - 25 x 20 cm (10" x 8")
- 3,137 prints/h - 15 x 10 cm (6" x 4")
- 2,105 prints/h - 10 x 15 cm (4" x 6")
- 3,595 prints/h - 13 x 9 cm (5" x 3.5")
- Exposure speed 5.3 m/min (17.4 ft/min)



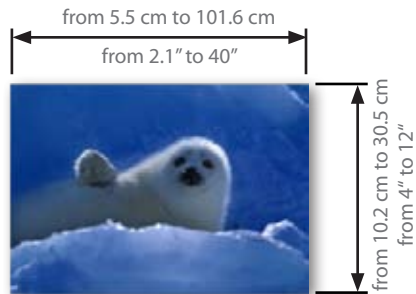
ideal to print photo book pages and covers for a square large-size photo book



Print and paper sizes

Print sizes

Paper width	Paper width 10.2 cm (4"), 12.7 cm (5"), 15.2 cm (6"), 17.8 cm (7"), 20.3 cm (8"), 25.4 cm (10"), 27.9 cm (11"), 30.5 cm (12")
Picture length	5.5 cm to 101.6 cm (2.1" to 40")
Maximum print size	30.5 x 101.6 cm (12" to 40")



Paper sizes

Supply magazine (standard specification)

Maximum length of paper	500 m (1,640 ft)
Paper	Thin paper (200 μm) is supported

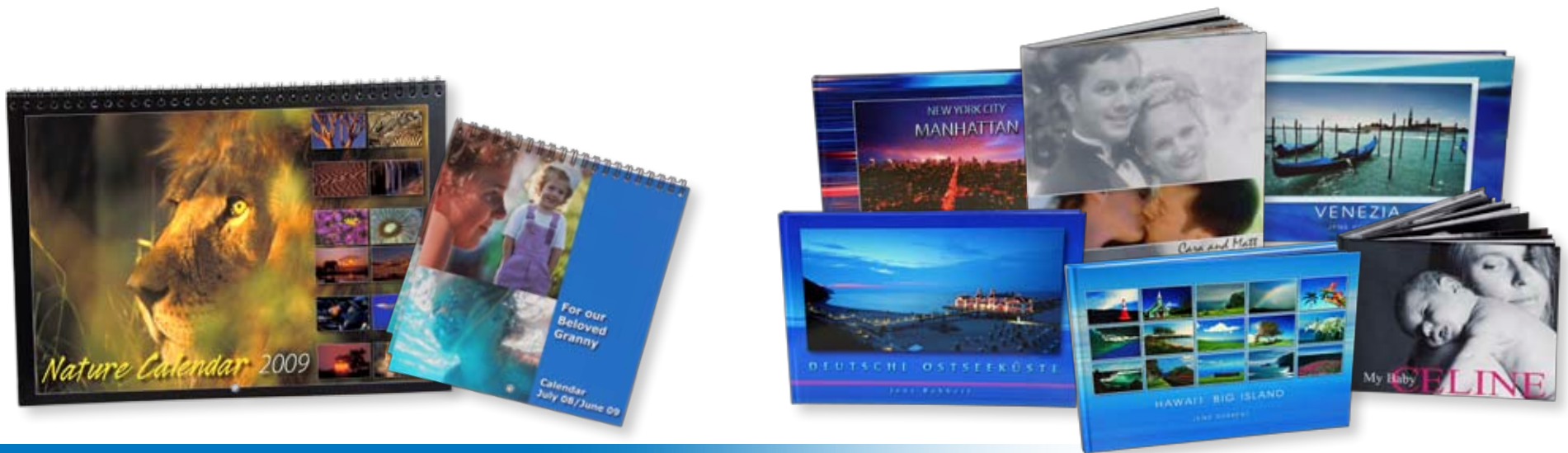
Take-up magazine

Maximum length of paper	365.7 m (1,199 ft)
Paper	Thin paper (200 μm) is supported



Printer exposure engine

Exposure method	Line exposure method by the Laser engine
Output gradation	4,096 gradation (12-bit)
Maximum exposure width	32.5 cm (approx. 12.8")
Print resolution	300 ppi (Main Scanning)
Exposure speed	8.9 cm (3.5") /sec
Light source	B laser / G laser / R laser



Supported formats

Capacity of image file Approx. 4GB

Minimum size (*1) 64 pixel x 64 pixel

Maximum size (*2) 4,100 pixel x 13,100 pixel

The following images cannot be processed:

(*1): images which are under 64 pixels in either the vertical or horizontal direction

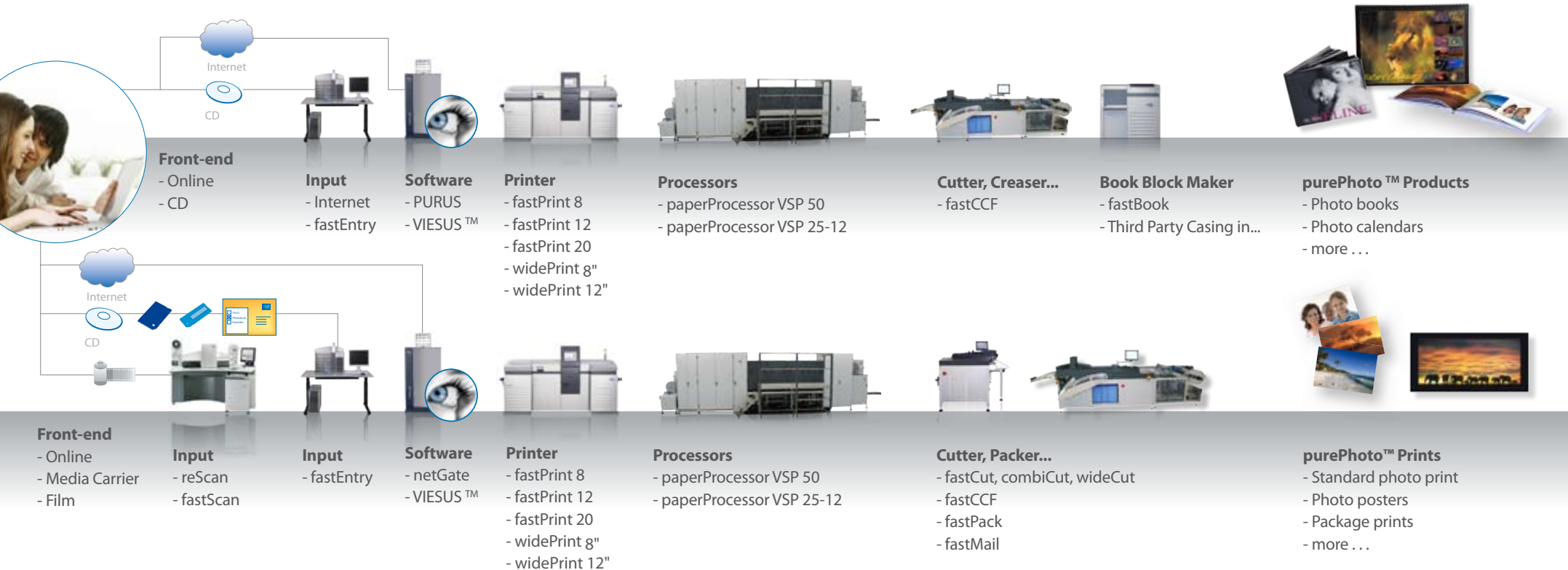
(*2): image which exceed 4,100 pixels in both the vertical and horizontal direction

Input

Compliant with PURUS and netGate
Fully integrated in the purePhoto™ workflow



The purePhoto™ workflow



Product portfolio

Input



Efficient processing of analog and digital input from film, CD, memory sticks etc

- fastScan
- reScan
- fastEntry

Software



Industry-leading image enhancement software and workflow systems for easy implementation, and frontend solutions without click rate

- netGate
- PURUS
- VIESUS™
- photoClient

Output



Fastest digital printers worldwide exposing up to 20,000 prints per hour from from 8.9 - 30.5 cm (3.5"-12")

- fastPrint 8
- fastPrint 12
- fastPrint 20
- widePrint 8"
- widePrint 12"

Processing



High-performance paper processor with optimal integration both to analog and digital workflow

- paperProcessor VSP 25-12
- paperProcessor VSP 50

Post-Processing



Advanced systems for production of book blocks for purePhoto™ books and for cutting, packing and sorting

- fastBook
- fastCCF, fastCut*
- wideCut, combiCut*
- fastPack, fastMail*

*manufactured by our subsidiary Imaging Postprocessing Solutions, Germany

Imaging Solutions - Your system partner



SWISS MADE



purePhoto™

is for people with a vision
of the **future**, who love and enjoy
quality, and who believe in the
beauty of pure photo products.

PURE PHOTO
QUALITY

Althardstrasse 70
CH-8105 Regensdorf

Imaging Solutions AG
Sales & Marketing

sales@imagingsolutions.ch
www.imagingsolutions.ch

Switzerland

Tel. +41 44 842 21 21
Fax +41 44 842 21 42